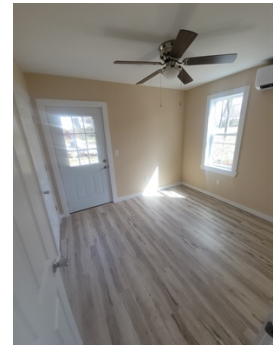


# FOR LEASE - Don't Miss This One!

FOR RENT \$1200/m.



1446 N. Ethyl Ave, Springfield, MO 65802

- » Deposit: \$1200
- » Beds: 3 | Baths: 2 Full
- » Single Family | 1,050 ft<sup>2</sup>
- » Looking for a rental? This beautifully remodeled home is definitely worth a closer look.
- » Featuring 3 bedrooms, 2 bathrooms across 1,050 sq. ft, this home offers modern updates and a fresh, move-in-ready.
- » More Info: [1446NEthylAve.Is4Rent.com](http://1446NEthylAve.Is4Rent.com)



Tony Zubku  
Larisa Zubku  
(417) 343-6511 (Text/Call)  
(417) 693-1093 (Text/Call)  
[springfieldrealtyexperts@gmail.com](mailto:springfieldrealtyexperts@gmail.com)  
<https://www.springfieldrealtyexperts.com>

Springfield Realty Experts  
3042 E Chestnut Expressway  
Springfield, MO 65802  
(417) 343-6511

